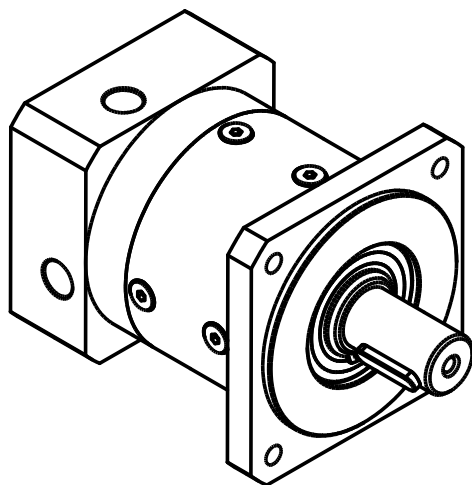
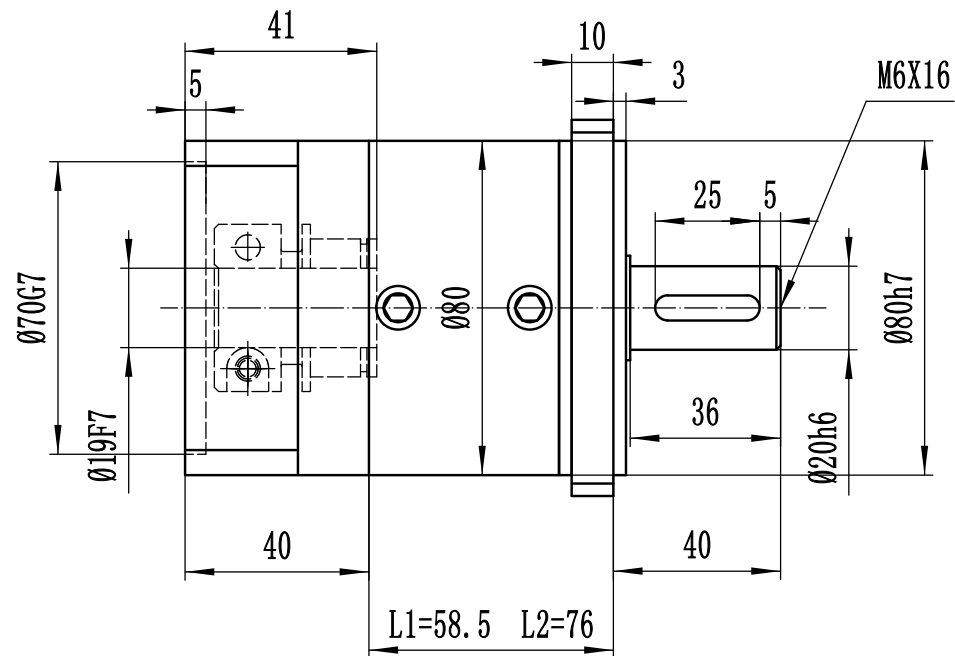


Technical drawing of a square flange with a central hole and four mounting holes. The drawing shows a square flange with a central hole of diameter 22.5 mm. The outer square has a side length of 90 mm. There are four mounting holes, each with a diameter of 10 mm, spaced 100 mm apart. The distance from the center to the center of each mounting hole is 46.5 mm. The thickness of the flange is 6 mm.



7. 噪音: $\leq 58\text{dB}$

						80-P2-S2					
标记	处数	分 区	更改文件号	签 名	年、月、日						
设 计			标准化			阶 段 标 记	重 量	比 例			
								1:1			
审 核									A. PAG80.01.0014		
工 艺			批 准			共 张 第 张					